

PAX-it™ 2 Modules

Digital Image Management and Image Analysis

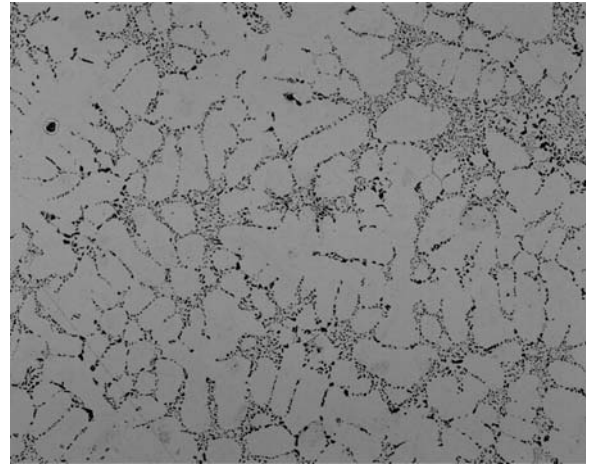
Core Analysis

This module allows a user to perform a wide variety of analyses, from Retained Austenite area fractions, to porosity size/shape measurements, to simple inclusion analyses. Also included is ability to measure layer thicknesses.



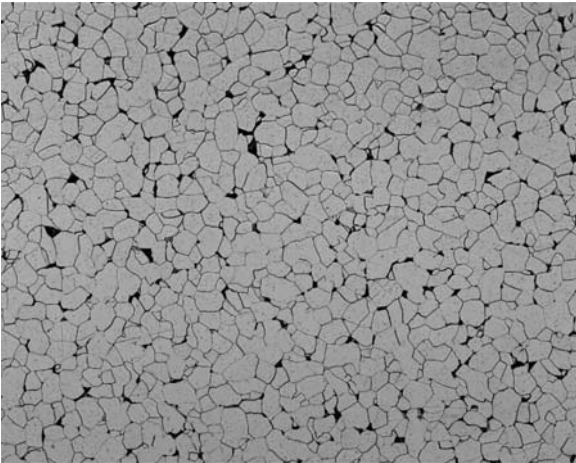
Cast Aluminum

As a quality control measure, metallographically prepared cast aluminum samples can be quickly examined for Dendrite Arm Spacing and porosity.



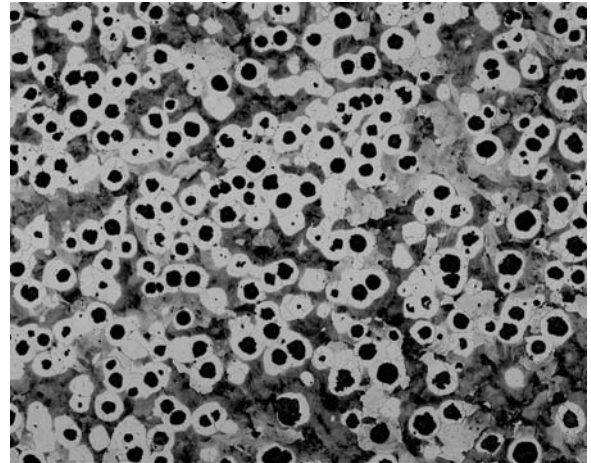
Grain Size

Chose from several "intercept methods" to determine the ASTM Grain Size Number of an etched metal sample. These include horizontal lines, vertical lines, diagonal lines, and Abrams Circles.



Cast Iron

For gray cast iron, you can perform flake size analysis per ASTM A247. Additionally, the size, roundness, and density of nodules in ductile cast iron specimens can be determined. For all ferrous alloys, the area fractions of Ferrite and Pearlite can be measured.



Specifications and part numbers may change.
Consult LECO for latest information.

PAX-it™ and PAXcam™ are trademarks of Midwest Information Systems, Inc.

3000 Lakeview Avenue • St. Joseph, MI 49085 • Phone: 800-292-6141 • Fax: 269-982-8977
info@leco.com • www.leco.com • ISO-9001:2008 HQ-Q-994 • LECO is a registered trademark of LECO Corporation.

LECO Corporation



Delivering the Right Results